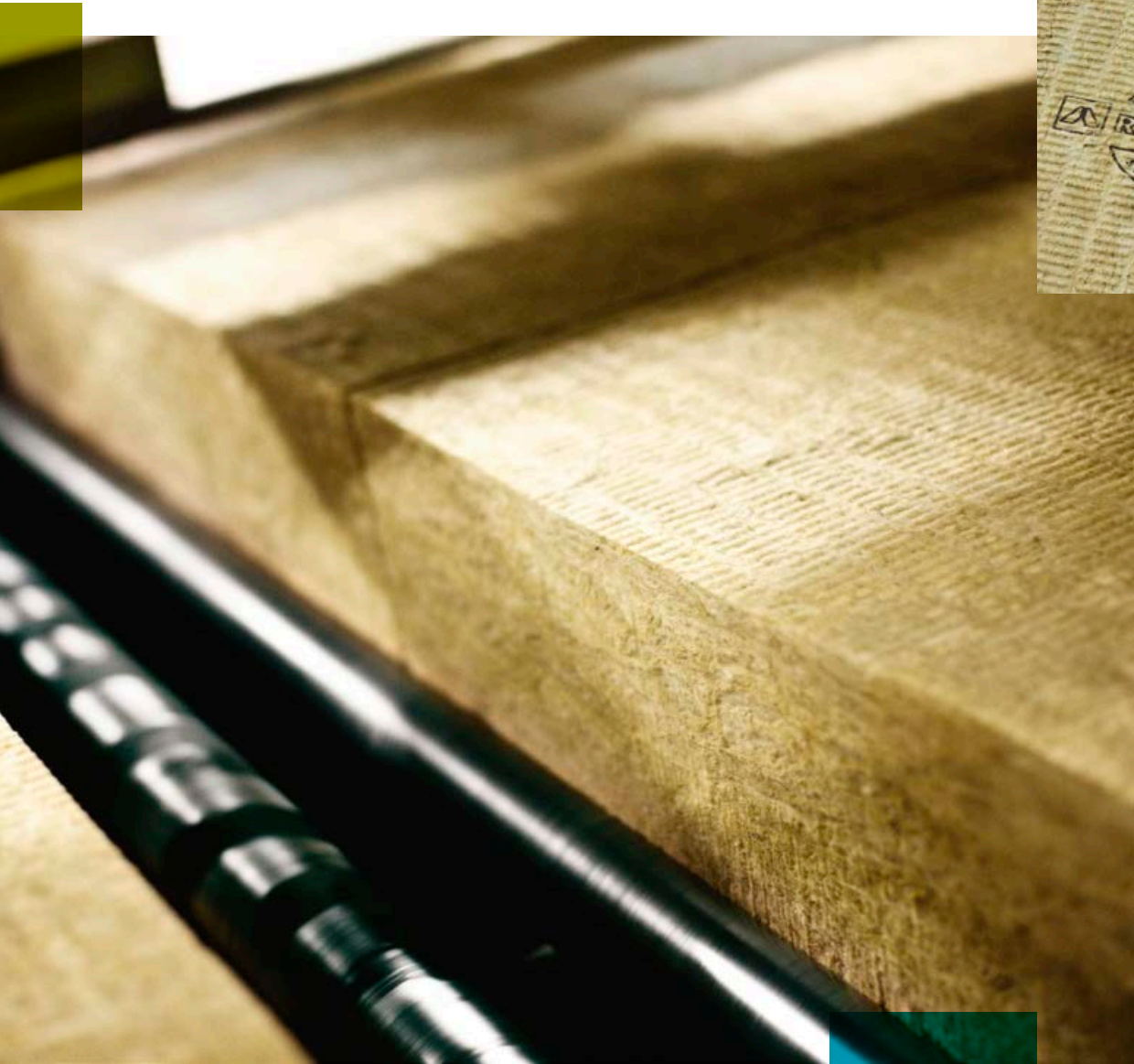




ROCKCYCLE® the heart of ROCKWOOL sustainability

Let's turn ROCKWOOL waste into a new resource, creating sustainable construction together.



Turning challenges into opportunities

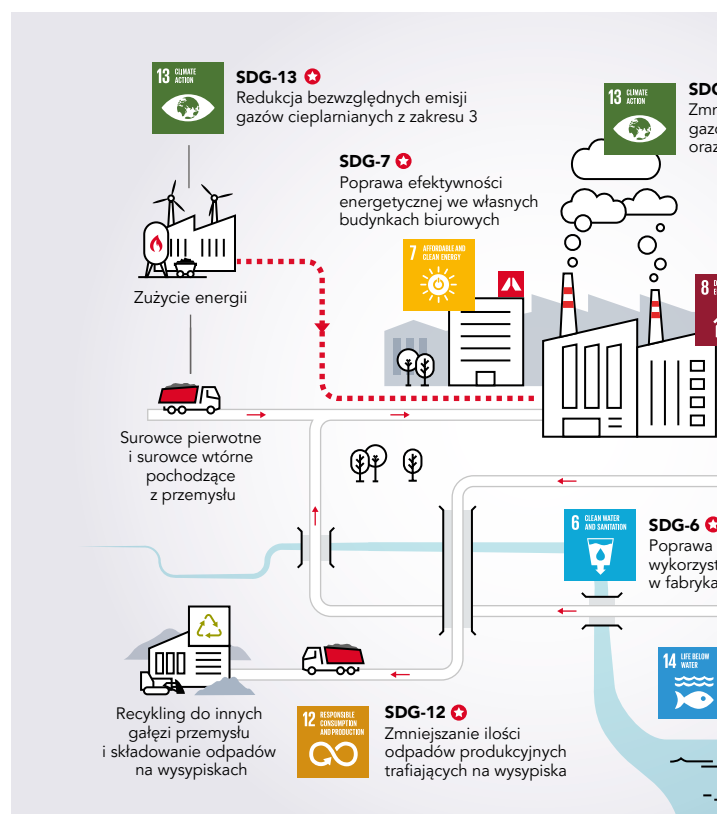
At ROCKWOOL we transform volcanic rock in stone wool to produce products that are tackling many of society's biggest challenges related to climate change. We are creating new opportunities to enrich modern life and build safer, healthier and more climate-resilient communities. Stone wool is a versatile natural material that has many uses in construction, industry, transport, horticulture and water management.

Sustainability is at the heart of our business strategy. We are one of the pioneers in the active implementation of the UN Sustainable Development Goals. Since 2016 year, we use this framework to set our own group targets and measure our progress and achievements. We initially focused on 10 of the 17 goals, and in 2022 we added an eleventh - SDG 14 'Living underwater' - recognising it as relevant to our business.



Our priorities:

Fight w
climate



Nasza wytworzona wartość:

Oszczędność
i czystsze środowisko

We create innovative products that address the pressing needs of modern society. With them we transform sustainability challenges into business strategies. At ROCKWOOL we have developed eight group-level sustainability goals, two of which are science-based, reviewed and endorsed by the Science Based-Targets initiative. We strive to create a sustainable world that goes beyond reducing our operational carbon footprint.

Commitment in sustainable development is visible in all respects of our activities.

From the production process, to the way we manage waste, to the final products. Our activities are aimed not only at minimising negative environmental impacts, but also at actively contributing to improving the quality of life and protecting our planet.

The culmination of our sustainability efforts is the Rockcycle® programme. This is an innovative stone wool recycling scheme that allows the material to be reused in new building projects. The programme not only reduces the amount of waste going to landfill, but also contributes to increase resource efficiency and reduce CO₂ emissions. By supporting closed loop economy, Rockcycle® is a key element of our sustainability strategy.

At ROCKWOOL we believe that every little bit makes a difference. Through our actions, products and commitment to sustainability, we contribute to building a better world for future generations. We invite you to work with us and shape the future together, where sustainability and recycling become the foundation of modern building.

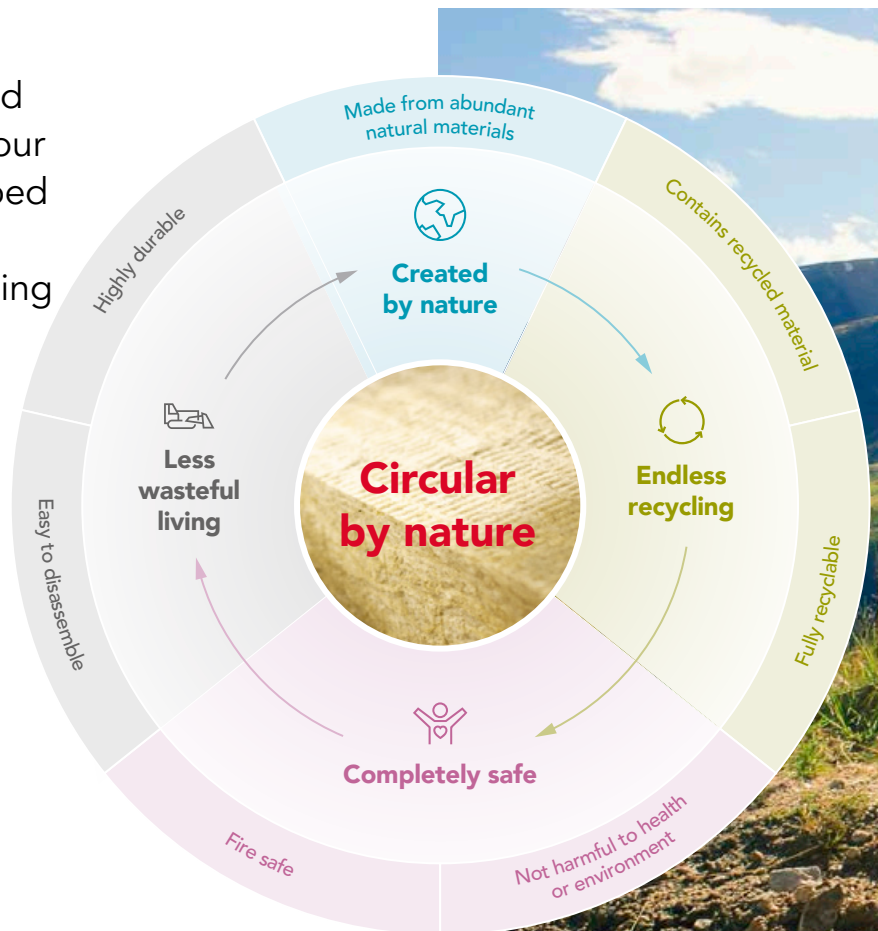




From waste to resource.

Rockcycle® - ROCKWOOL's innovative approach to recycling

At ROCKWOOL we understand the importance of protecting our planet. That's why we developed Rockcycle® - an innovative approach to stone wool recycling that contributes to the achievement of the to meet sustainability targets. ROCKWOOL is a building material with outstanding insulating, acoustic and fireproof properties. It is the ideal choice for ecological construction.



What is Rockcycle®?

Rockcycle is a recycling service that you can use to return new off-cuts and unused ROCKWOOL stone wool insulation from construction sites in the Malaysia. Our dedicated recycling facility in Melaka is able to recycle ROCKWOOL stone wool insulation made in Malaysia, supporting a circular economy in the construction industry by turning it into new product and diverting waste from landfill.



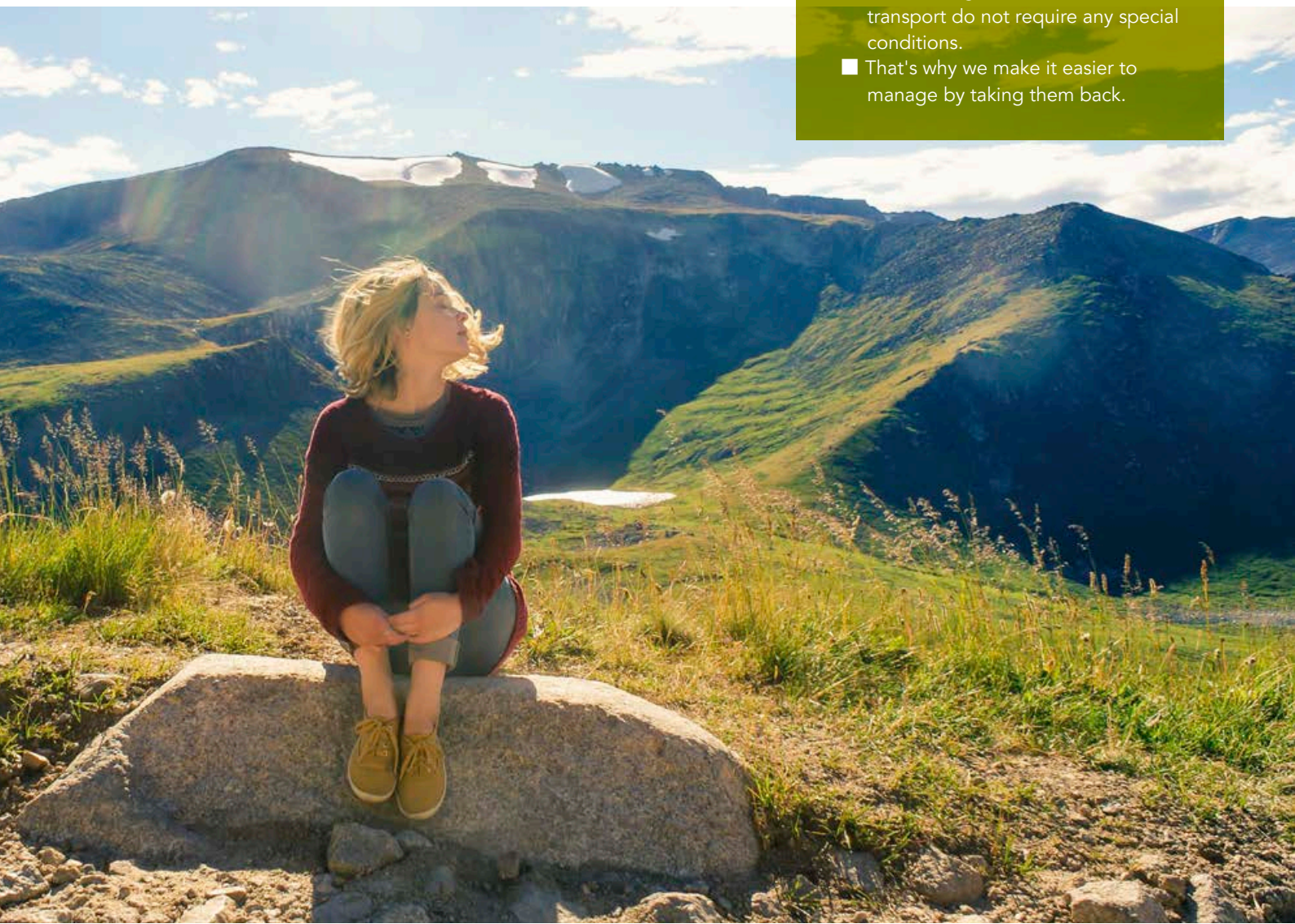
Why use the service?

Construction waste recycling is becoming an increasing priority, driven by regulatory requirements, economic realities, and environmental needs.

Architects, construction companies and their clients are seeking ways to reduce waste at building sites and demanding a more sustainable approach to using construction materials. Rockcycle® offers a practical route for contractors seeking to operate more sustainably by reducing waste to landfill.

Recycling through Rockcycle® can also contribute towards credits in building sustainability assessments such as GBI and LEED. Using the Rockcycle® programme involves a cost per project, which may vary due to the logistics and distances involved. A price will be provided upon each application.

- ROCKWOOL Stone Wool scraps not soiled are inert waste and not dangerous
- Their sorting, collection and transport do not require any special conditions.
- That's why we make it easier to manage by taking them back.



Cooperation and principles of the Rockcycle® programme

At ROCKWOOL we are committed to helping our customers achieve their sustainability goals. The Rockcycle® programme offers a unique opportunity to turn stone wool waste into full value products.



Advantages of the Rockcycle® Programme for ROCKWOOL Partners

The Rockcycle® programme offers ROCKWOOL partners a range of benefits that contribute to their sustainability goals. Participation in the programme enables them to build a reputation as responsible and environmentally friendly business partners. With Rockcycle® partners can significantly reduce their environmental impact through effective waste management.

A key advantage of the programme is the simple and repeatable process, which enables a reduction in costs associated with the disposal of stone wool post-consumer waste. Rockcycle® ensures efficient use of waste, transforming it into a valuable resource, resulting in financial and environmental savings.



Who can benefit from Rockcycle®

The Rockcycle® programme is available to our customers who wish to actively contribute to sustainable development by recycling stone wool.

In each of our factories, scraps and waste from ROCKWOOL Stone Wool is already recycled. Today, ROCKWOOL gets operational for you. Our teams are ready to take up the challenge to collect, control and recycle waste from your place. Sorting is first step of Recycling while respecting the following steps:

- Immediate sorting to avoid dispersal of waste on the shop floor
- Source sorting of materials to limit control operations.
- Efficient sorting in accordance with the storage to prevent deterioration of sorted materials.
- Wet waste and any other waste like plastic, metal parts etc to be sorted out.

Stone wool recycling process

1 You decide

By choosing Rockcycle®, you agree to sort ROCKWOOL stone wool waste related to the delivery and offcuts of stone wool.

2 You Inform ROCKWOOL

You inform ROCKWOOL on the volume of ROCKWOOL stone wool waste generated at your place for us to be prepared and understand your waste condition.

3 You isolate and you sort

We can accept waste that has been sorted according to the guideline provided.



We recycle, we value Deliver the wool to recycling as agreed in the contract.

6

Collect & transport

Waste will be collected based on the agreed transportation.

5

Notify us

You notify our ROCKWOOL representative on our removal request of your ROCKWOOL stone wool waste.

4

How to participate

The Rockcycle® recycling service is available for all customers of ROCKWOOL Malaysia. Prices are provided per use to the Rockcycle® services. A price will be offered upon each application.

We have tailored the service to help make recycling stone wool even easier. Please contact us to discuss recycling opportunities for your next project.

E-mail : rockcyclemy@rockwool.com



Legal disclaimer

The ROCKWOOL Trademark

ROCKWOOL® - our trademark

The ROCKWOOL trademark was initially registered in Denmark as a logo mark back in 1936. In 1937, it was accompanied with a word mark registration; a registration which is now extended to more than 60 countries around the world. The ROCKWOOL trademark is one of the largest assets in the ROCKWOOL Group, and thus well protected and defended by us throughout the world.

Disclaimer

ROCKWOOL Malaysia Sdn. Bhd. reserves the right to alter or amend the specification of products without notice as our policy is one of constant improvement. The information contained in this brochure is believed to be correct at the date of publication. Whilst ROCKWOOL Malaysia Sdn. Bhd. will endeavour to keep its publications up to date, readers would appreciate that between publications there may be pertinent changes in the law, or other developments affecting the accuracy of the information contained in this brochure. The applications referred to within the brochure do not necessarily represent an exhaustive list of applications. ROCKWOOL Malaysia Sdn. Bhd. does not accept responsibility for the consequences of using ROCKWOOL in applications different from those described within this brochure. Expert advice should be sought where such different applications are contemplated, or where the extent of any listed application is in doubt.

For more information at www.rockwoolasia.com

ROCKWOOL Malaysia Sdn. Bhd.
Lot 4, Solok Waja 1, Bukit Raja Industrial Park,
41050 Klang, Selangor, Malaysia.
T (+60) 3 3341 3444 · F (+60) 3 3342 7290
info@rockwool.com