

Isolate, sort, we take care of the rest





Be closer to your needs, support you in the management of your sites, these are the objectives from Rockcycle, our new take-back service and treatment of waste from our products. For you, this is the advantage of being one step ahead, the one that anticipates the regulations of tomorrow and its logistical and financial constraints. It is also the assurance of a responsible image and citizen for your business.

Rockcycle is also a prescription tool that is part of a logic of the sustainable future of our trades. Together we can make this process operational. Because everyone has to answer to different constraints while committing its responsibility today.

Elsewhere, we are already thinking about it ...

A Native American legend says:

"The Amazon rainforest is on fire. The fire devastates wildlife and flora. The hummingbird, takes in its beak water, from the lake to calm the flames. The armadillo laughs at him:

- It's not you alone who will put out this fire!

The hummingbird then replies:

- No, I know. But I'm doing my part. "

This quality is all your difference. Together, let's do our part for the future.

Our common priority: Insulate building in a responsible and committed approach

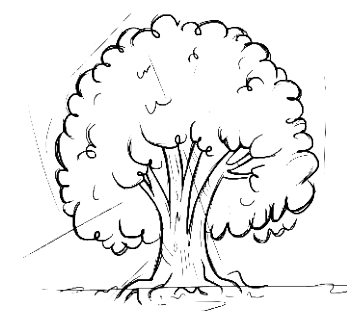
In each of our factories, scraps and waste from ROCKWOOL Stone Wool is already recycled.



Today, ROCKWOOL gets operational for you. Our teams are ready to take up the challenge to collect, control and recycle waste from your place.

Sorting is first step of Recycling while respecting the following steps:

- Immediate sorting to avoid dispersal of waste on the shop floor
- Source sorting of materials to limit control operations.
- Efficient sorting in accordance with the storage to prevent deterioration of sorted materials.
- Wet waste and any other waste like plastic, metal parts etc to be sorted out.



Rockcycle,

a service that registers you in a process sustainable development.

Mark your difference with a responsible image.

Good to know

- ROCKWOOL Stone Wool scraps not soiled are inert waste and not dangerous
- Their sorting, collection and transport do not require any special conditions.
- That's why we make it easier to manage by taking them back.

The 6 steps of the process Rockcycle



1 You decide

By choosing ROCKCYCLE, you agree to sort ROCKWOOL Stone Wool waste related to the delivery and offcuts of stone wool.

2 You Inform ROCKWOOL

You inform ROCKWOOL on the volume of ROCKWOOL Stone Wool waste generated at your place for us to be better prepared.

3 You isolate and you sort

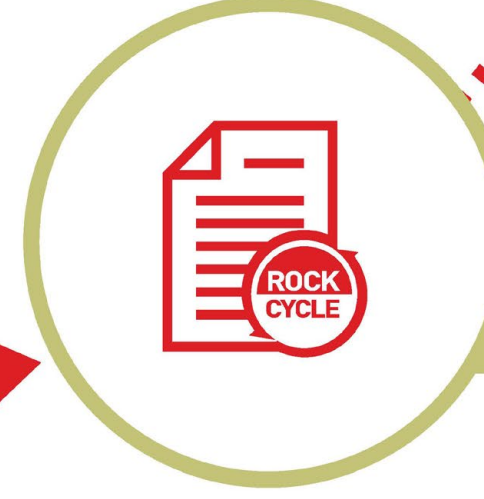
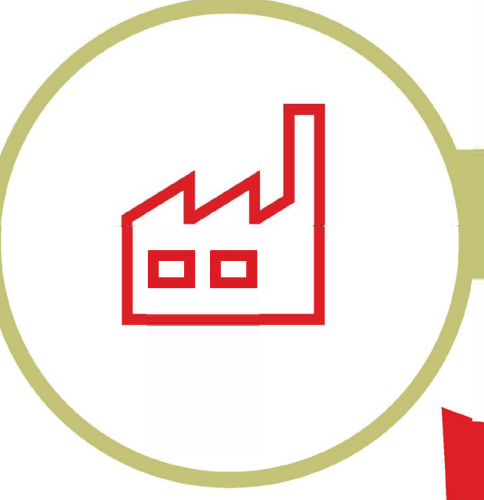
When the operation starts, you inform your teams sorting instructions. You also ensure that all the sorting principle is respected in accordance with the instruction given in this collateral.

You warn us 4

You inform your ROCKWOOL contact on your removal request of Stone Wool Waste. Along with ROCKWOOL Logistic team, you indicate the desired pickup date.

We recycle, we value 6

ROCKWOOL is committed to recycling all of collected waste.



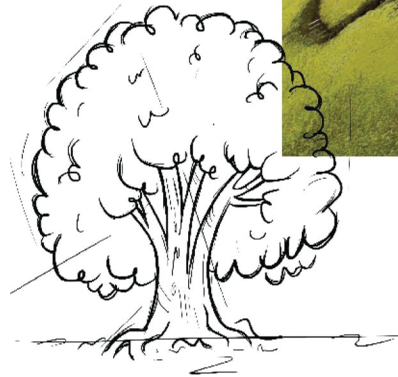
**ROCKWOOL Building Materials
(Singapore) Pte. Ltd.**

No. 7, Tuas Avenue 1,
Jurong Town, Singapore 639492.

T (+65) 6861 4722
F (+65) 6862 3533

At the ROCKWOOL group we are committed to enriching the lives of everyone who experiences our solutions. Our expertise is perfectly suited to tackle many of today's biggest sustainability and development challenges, from energy consumption and noise pollution, to fire-resilience, water scarcity and flooding. Our range of product reflect the diverse needs of the world, while supporting our stakeholders and reducing their own carbon footprint stone wool is a versatile material and forms the basis of all businesses. With over 11,000 passionate colleagues in 39 countries, we're the world leader in a stone wool solution from building insulation and industrial insulation for process industries.

For more information please contact our representatives or email us at info@rockwoolasia.com or call our Hotline at (+65) 6861 4722.



Disclaimer: The information contained in this brochure is believed to be correct at the date of publication and is subject to change after the date of printing. ROCKWOOL does not accept responsibility for the consequences of using any product in this brochure in any applications different from those described here.



www.rockwoolasia.com

